



**Cindy Boucher**  
076 941 1469  
cindy.boucher@seeff.com



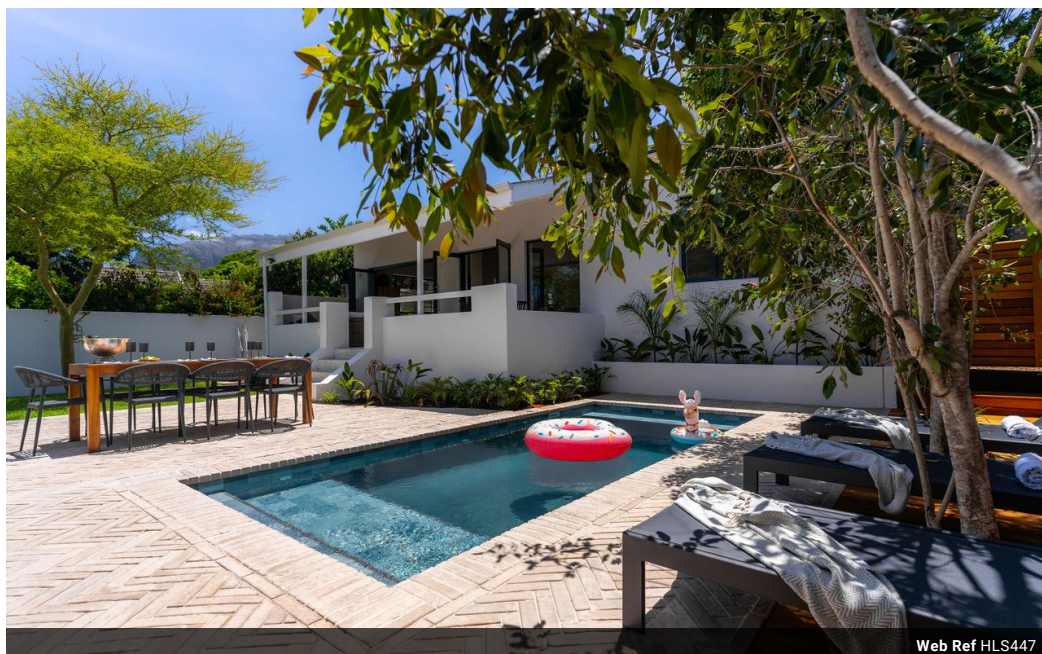
**Yvonne Jardim**  
0723721994

yvonne.jardim@seeff.com

Contact Hout Bay

021 7901032

Shop B1 Mainstream Centre  
Princess Street  
Hout Bay  
7806



Web Ref HLS447



From R6,000 Per Night

**High Season**  
R 6,000

**Mid Season**  
R 6,000

**Low Season**  
R 6,000

**Out Season**  
R 6,000

Prices are Per House Per Night



### BOUTIQUE COASTAL RETREAT

Seaside Bungalow blends boutique luxury with coastal charm, accommodating up to 8 guests. The main house offers 3 bedrooms, 2 bathrooms, and an open-plan living area with seamless indoor-outdoor flow to a covered verandah.

A private studio suite opens onto the scenic verandah. Enjoy the solar-heated pool, shaded garden, braai, and alfresco dining area. Situated in a secure, guard-patrolled area, with ample parking and family-friendly amenities, it's perfect for a serene getaway.

The space

Blurring the lines between a luxury boutique hotel and a private coastal escape, Seaside Bungalow offers a serene haven for up to eight guests. Perfect for families or small groups, the property comprises a beautifully designed main house with three spacious bedrooms and two bathrooms, complemented by a separate mountain-view studio suite...

### Features

Floor Single Storey  
Views Mountain View  
Cleaning Services On Request

#### Bedrooms - 4

Sleeps 8  
King Beds 2  
Queen Beds 1  
Single Beds 2

#### Bathrooms - 3

Baths 1  
Showers 2

#### Living Areas

Lounge 1

#### Exterior

Views Mountain View  
Garden Private  
Braai Charcoal - Built-in  
Pool Private  
Jacuzzi No

#### Parkings - 4

Open 2

#### Notes

Seaside coastal holiday

