

FEATURED

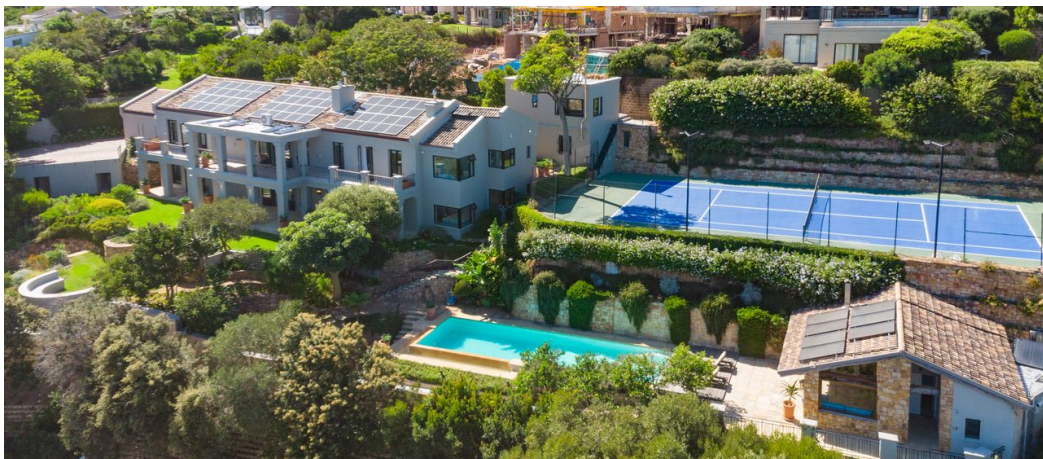


Ingrid Killa
083 320 8557
ingred@seeff.com

Contact Hout Bay

021 7901032

Shop B1 Mainstream Centre
Princess Street
Hout Bay
7806



Web Ref RLS979895



R42,000,000

Monthly Bond Repayment R433,519.12
Calculated over 20 years at 11% with no deposit.

Transfer Costs R5,132,371.00 **Bond Costs** R132,285.00
These calculations are only a guide. Please ask your conveyancer for exact calculations.

Monthly Rates R5,427

6 5.5 2

Experience Unrivalled Luxury and Seaside Splendour

Nestled atop the majestic slopes of Baviaanskloof, Villa Chatelet stands as one of Hout Bay's most exceptional properties, offering breathtaking views of the bay, harbour and surrounding mountains from nearly every corner. This rare and opulent retreat is a sanctuary where timeless elegance meets modern sophistication, providing a truly unparalleled living experience.

Set within nearly an acre of beautifully landscaped gardens with hidden surprises, the villa is a masterpiece of design, seamlessly blending with its natural surroundings. As you enter the property, you'll be immediately captivated by the panoramic sea views that stretch as far as the eye can see, offering an ever changing spectacle from sunrise to sunset. Whether you're relaxing in the villa, lounging by the solar heated swimming pool or enjoying the outdoor...

Features

Pets Allowed Yes

Interior

Bedrooms 6
Bathrooms 5.5
Kitchens 3
Recep. Rooms 5
Studies 1
Furnished No

Exterior

Garages 2
Carports / Parkings 8
Security Yes
Pool Yes
Views True

Sizes

Floor Size 650m²
Land Size 3,623m²

Extras

Sea Mountain Landscaped Tennis Court