



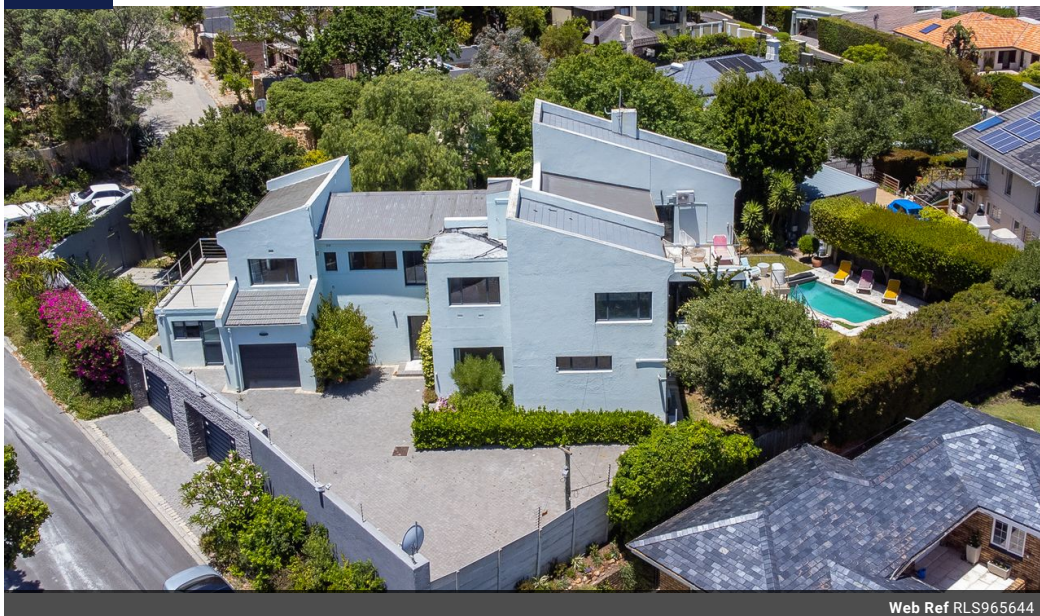
Jeanne McCaig
082 512 1034
jeanne.m@seeff.com

Contact Hout Bay

021 7901032

Shop B1 Mainstream Centre
Princess Street
Hout Bay
7806

FEATURED



Web Ref RLS965644



R11,995,000

6 5 1

Monthly Bond Repayment R123,811.00
Calculated over 20 years at 11% with no deposit.

Transfer Costs R1,211,739.00 **Bond Costs** R94,285.00
These calculations are only a guide. Please ask your conveyancer for exact calculations.

Monthly Rates R4,340

Expansive Scott Estate Home with Sea Views

This stylish home offers great versatile accommodation for a family, Airbnb or even dual living potential. A contemporary open plan design complemented with an expanse of glass to showcase the surrounding garden and sea views and tucked away at the end of a quiet cul-de-sac.

The lower level features an entrance hall, guest cloakroom, fireplace, 3 gorgeous reception areas - all flowing to the garden, kitchen, separate scullery, laundry, 2 bedrooms and a full bathroom. There is also a flatlet with a large kitchen and separate entrance.

The upper level comprises 4 extremely spacious bedrooms (3 en-suite) and an office. The expansive master bedroom with a walk in closet leads onto a lovely ocean view balcony with glorious views.

The mature garden is fully enclosed with the lovely pool taking centre stage and overlooked by the...

Features

Pets Allowed	Yes		
Interior		Exterior	Sizes
Bedrooms	6	Garages	1
Bathrooms	5	Carports / Parkings	6
Kitchens	1	Security	Yes
Recep. Rooms	2	Pool	Yes
Studies	1	Views	True
Furnished	No		
			Land Size 1,135m ²