



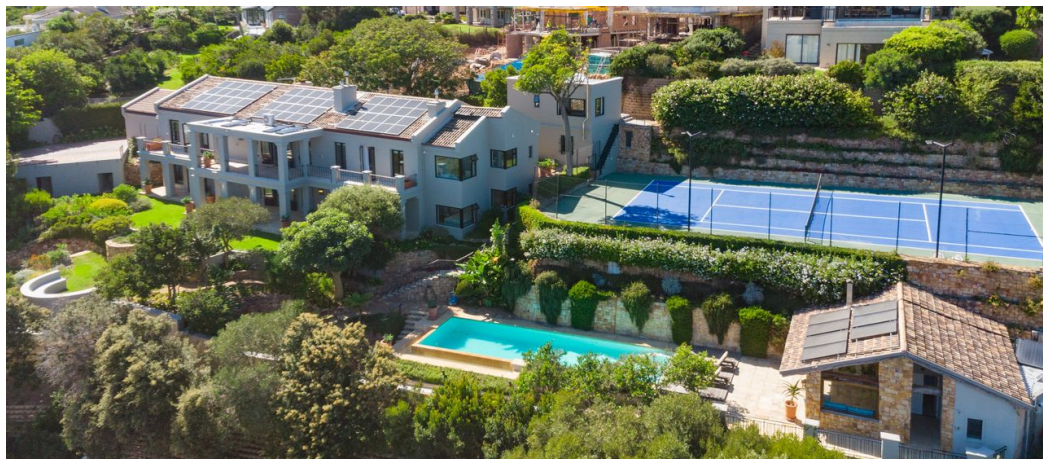
**Ingrid Killa**  
083 320 8557  
ingred@seeff.com

Contact Hout Bay

021 7901032

Shop B1 Mainstream Centre  
Princess Street  
Hout Bay  
7806

### FEATURED



Web Ref RLS991000



## R38,000,000

🚗 6 🚗 5.5 🚗 2

**Monthly Bond Repayment** R379,384.36

Calculated over 20 years at 10.5% with no deposit.

**Transfer Costs** R4,612,826.00 **Bond Costs** R132,285.00

These calculations are only a guide. Please ask your conveyancer for exact calculations.

**Monthly Rates** R5,427

### Coastal Grandeur - The Pinnacle of Seaside Living

Nestled atop the majestic slopes of Baviaanskloof, Villa Chatelet stands as one of Hout Bay's most exceptional properties, offering breathtaking views of the bay, harbour and surrounding mountains from nearly every corner. This rare and opulent retreat is a sanctuary where timeless elegance meets modern sophistication, providing a truly unparalleled living experience.

Set within nearly an acre of beautifully landscaped gardens with hidden surprises, the villa is a masterpiece of design, seamlessly blending with its natural surroundings. As you enter the property, you'll be immediately captivated by the panoramic sea views that stretch as far as the eye can see, offering an ever changing spectacle from sunrise to sunset. Whether you're relaxing in the villa, lounging by the solar heated swimming pool or enjoying the outdoor...

### Features

**Pets Allowed** Yes

#### Interior

Bedrooms	6
Bathrooms	5.5
Kitchens	3
Recep. Rooms	5
Studies	1
Furnished	No

#### Exterior

Garages	2
Carports / Parkings	8
Security	Yes
Pool	Yes
Views	True

#### Sizes

Floor Size	650m <sup>2</sup>
Land Size	3,623m <sup>2</sup>

#### Extras

Sea Mountain View Landscaped Tennis Court

